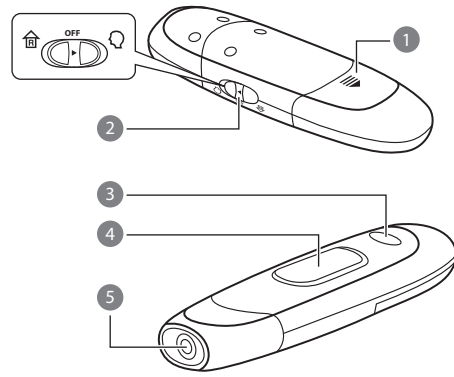


Appearance And Key Functions

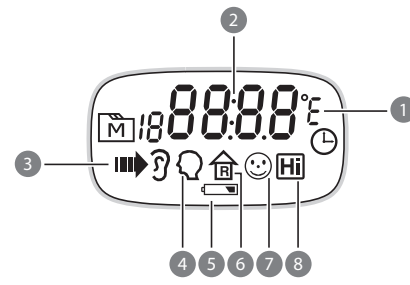


- 1 Battery Compartment
- 2 Mode Switch
- 3 SCAN Button
- 4 Display Screen
- 5 Probe

Introduction

Thank you for choosing URiGHT™ Azure forehead thermometer. This innovative medical device relies on advanced infrared (IR) technology to measure temperature instantly. The thermometer measures the infrared heat generated by the surface of the skin over the vessel and its surrounding tissue. The thermometer then converts it into a temperature value shown on LCD.

LCD Screen

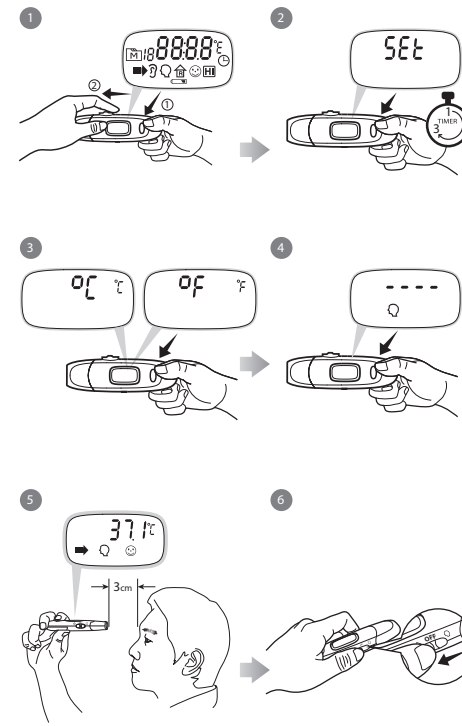


- 1 Temperature unit
- 2 Temperature display
- 3 Temperature scanning in progress
- 4 Forehead temperature indicator
- 5 Low battery indicator
- 6 Object surface temperature indicator
- 7 Smiling face indicator
(Temperature falls within normal range)
- 8 High temperature indicator

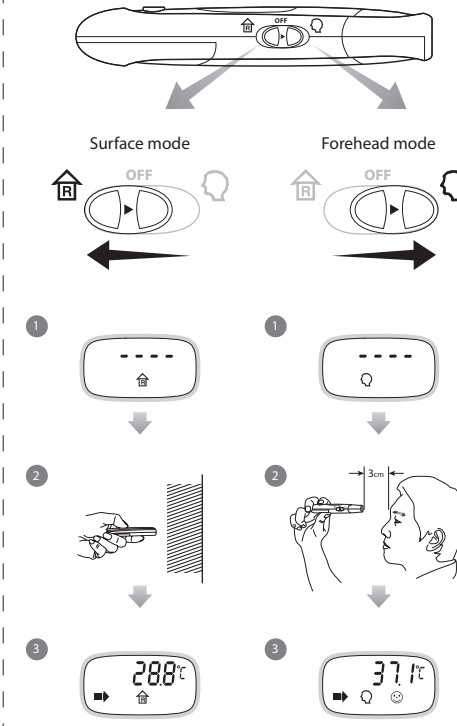
Intended Use

URiGHT™ Azure forehead thermometer is intended for the intermittent measurement and monitoring of human body temperature from forehead. The device is intended for use by people of all ages at home.

Select The Temperature Unit



Perform The Test



NOTE
While in surface mode, the meter will take measurement continuously if you press and keep holding the scan button.

Reference Standards

Device Standard:
Device Corresponds to the requirements of the standard for infrared thermometers
ASTM E1965-98, EN ISO 80601-2-56:2012,
EN 60601-1-2:2007/AC:2010,
EN 60601-1:2006+A12:2014, EN 60601-1-6:2010

Electromagnetic Compatibility:
Device fulfills the stipulations of the standard EN 60601-1-2

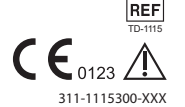


The stipulations of EU-Directive 93/42/EEC for Medical Devices Class IIa have been fulfilled.



TaiDoc Technology Corporation
81-77, No. 127, Wugong 2nd Rd.,
Wugu Dist., 24888 New Taipei City, Taiwan
www.taidoc.com

MedNet GmbH
Borkstraße 10, 48163 Münster, Germany



WARRANTY REGISTRATION CARD

Dealer's portion

Name of product: _____

Name of owner: _____

Address: _____

Tel No: (Mobile) _____ (H) _____ (O) _____ Age: _____ Gender: M F

Email: _____

Date of Purchase: / / day month year

Serial No.: _____

Dealer's Stamp: _____

*IMPORTANT: To qualify for the warranty, please fill in this card and mail to us within 14 days from the date of purchase.

YEAR WARRANTY

WARRANTY CERTIFICATE

Owner's portion

Name of product: _____

Name of owner: _____

Address: _____

Tel No: (Mobile) _____ (H) _____ (O) _____ Age: _____ Gender: M F

Email: _____

Date of Purchase: / / day month year

Serial No.: _____

Dealer's Stamp: _____

*NOTE: Please produce this card together with the purchase receipt for warranty service.

Result Indicators

	Temperature falls within measurement range: 34.4°C to 37.9°C (93.9°F to 100.2°F) and the LCD backlight will display "Green".
	Temperature falls within measurement range: 38.0°C to 42.2°C (100.4°F to 108°F) and the LCD backlight will display "Red".
	Temperature falls outside the displayed range: • Hi-temperature ≥ 42.3°C (108.1°F) • Lo-temperature ≤ 34.3°C (93.7°F) is shown on the display with "Blue" LCD backlight.

Detailed Information

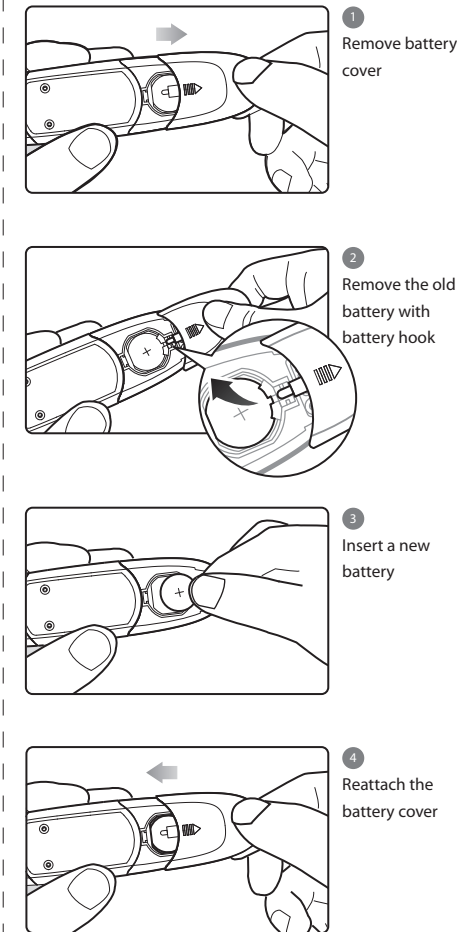
Body temperature can vary from one individual/person to the next. It also varies by location on the body and time of day. Below shows the statistical normal ranges from different sites. Please keep in mind that temperatures measured from different sites, even at the same time, should not be directly compared.

Table*1 Body Site Normal Temperature Range

Oral	0.6°C (1°F) or more above or below 37°C (98.6°F)
Rectal/Ear	0.3°C to 0.6°C (0.5°F to 1°F) higher than oral temperature
Axillary (armpit)	0.3°C to 0.6°C (0.5°F to 1°F) lower than oral temperature

*1. Body Temperature at WebMD;
website: <http://firstaid.webmd.com/body-temperature> retrieved at 2010 Jan 7.

Replacing The Battery



Troubleshooting

Message	What it means	What to do
	Environmental temperature is below or above system operation range.	Put the thermometer under operating temperature range, 10°C to 40°C (50°F to 104°F).
	Problem with the thermometer.	Review the instructions and re-start the measurement. If the steps do not work, contact local customer service.
	Battery is low and " " appears on LCD.	The meter is functional and the result remains accurate, but it is time to change a new battery.
	The battery can't provide enough power for a test. After 3 beeps, the meter will turn off automatically.	Replace a new battery immediately.

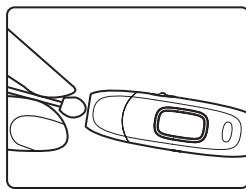
Import Safety Instructions

- Close supervision is necessary when the thermometer is used by, on, or near children, handicapped persons or invalids.
- Use the thermometer only for the intended use described in this manual.
- Do not use the thermometer if it is not working properly, or if it has suffered any damage.
- Do not use accessories which are not supplied or recommended by the manufacturer.
- Proper maintenance is essential to the longevity of your device. If you are concerned about your accuracy of measurement, please contact the local customer service or place of purchase for help.
- Always contact the manufacturer or the manufacturer's representative to report unexpected operation or event. Do not try to fix it by yourself.
- When using the thermometer, stay away from electromagnetic radiation, such as the mobile in use.
- Do not expose the device to strong electrostatic fields or strong magnetic fields to avoid affecting the measurement accuracy.
- Used in close proximity to others, EMC must be tested and verified.

Cautions and Warnings

- As with any thermometer, proper technique is crucial to getting accurate temperature readings. **Please read this operation instruction thoroughly and carefully before using.**
- Always operate the thermometer in an operating temperature range 10°C to 40°C (50°F to 104°F), and relative humidity less than 95%.
- Always store the thermometer in a cool and dry place: temperatures between -20°C to 60°C (-4°F to 140°F); relative humidity less than 95%. **Avoid direct sunlight and avoid dropping the thermometer.**
- Do not** disassemble the thermometer.
- Basic safety precautions should always be observed, especially when the thermometer is used on or near children and disabled persons.
- This thermometer is not intended to be a substitution for a consultation with your physician.

Care and Cleaning



- The probe is not waterproof. Please wipe with a clean and dry cotton swab to clean the probe on the inside.
- The body of the thermometer is water-resistant. Use a soft and dry cloth to clean it. Do not use abrasive cleaners.
- Store the thermometer in a cool and dry location. Free from dust and away from direct sunlight.

Symbol Information

Symbol	Referent
	Consult instructions for use
	Manufacturer
	Serial number
	Caution
	Authorized representative in the European Community
	Resistant to liquid ingress
	RoHS Compliance
	Type BF Equipment
	Temperature limitation
	Humidity limitation
	CE mark
	Catalogue number

This device does not belong to household waste and must be returned to a collection point for recycling electric and electronic devices according to local laws. If it contains batteries, the batteries should be removed and disposed in accordance with local regulations for separate collection of spent batteries.

Specifications

Model no.	URIGHT TM Azure
Dimensions	127.7mm x 37.7mm x 20.7mm
Weight	56.2 g
Battery	One 3V CR2032 lithium battery
Displayed temperature range	Forehead: 34.4°C to 42.2°C (93.9°F to 108°F) Surface: 1°C to 60°C (33.8°F to 140°F)
Display resolution	0.1°C / 0.1°F
Accuracy	±0.2°C (±0.4°F) for the range of 35.0°C to 42.0°C (95°F to 107.6°F)
Temperature unit	Fixed °C or °F
Operating temperature range	10°C to 40°C (50°F to 104°F)
Operating humidity	95% RH or less
Storage temperature range	-20°C to 60°C (-4°F to 140°F)
Storage humidity	95% RH or less
Waterproof	IP22

Manufacturer's declaration-electromagnetic emissions		
The URIGHT TM AZURE is intended for use in the electromagnetic environment (for home healthcare) specified below. The customer or the user of the URIGHT TM AZURE should assure that it is used in such an environment.		
Emission test	Compliance	Electromagnetic environment-guidance (for home healthcare environment)
RF emissions CISPR 11	Group 1	The URIGHT TM AZURE uses RF energy only for its internal function. Therefore, its RF emissions are very low and are not likely to cause any interference in nearby electronic equipment.
RF emissions CISPR 11	Class B	The URIGHT TM AZURE is suitable for use in all establishments, including domestic establishments and those directly connected to the public low-voltage power supply network that supplies buildings used for domestic purposes.
Harmonic emissions IEC 61000-3-2	Not applicable	
Voltage fluctuations / flicker emissions IEC 61000-3-3	Not applicable	

Manufacturer's declaration-electromagnetic immunity			
The URIGHT TM AZURE is intended for use in the electromagnetic environment (for home healthcare) specified below. The customer or the user of the URIGHT TM AZURE should assure that it is used in such an environment.			
Immunity test	IEC 60601 test level	Compliance level	Electromagnetic environment-guidance (for home healthcare environment)
Electrostatic discharge(ESD) IEC 61000-4-2	Contact: ±8 kV Air ±2 kV, ±4 kV, ±8 kV, ±15 kV	Contact: ±8 kV Air ±2 kV, ±4 kV, ±8 kV, ±15 kV	Floors should be wood, concrete or ceramic tile. If floors are covered with synthetic material, the relative humidity should be at least 30%.
Electrical fast transient/burst IEC 61000-4-4	+ 2 kV for power supply lines + 1 kV for input/output lines	Not applicable Not applicable	Mains power quality should be that of a typical home healthcare environment.
Surge IEC 61000-4-5	+ 0.5kV, +1kV (line(s) to line(s)) + 0.5kV, +1kV(+ 2kV line(s) to earth)	Not applicable Not applicable	Mains power quality should be that of a typical home healthcare environment.
Voltage Dips, short interruptions and voltage variations on power supply input lines IEC 61000-4-11	Voltage dips: 0 % U _n : 0.5 cycle 70 % U _n : 25/30 cycles Voltage interruptions: 0 % U _n : 250/300 cycle	Voltage dips: Not applicable Not applicable Voltage interruptions: Not applicable	Mains power quality should be that of a typical home healthcare environment. If the user of the URIGHT TM AZURE requires continued operation during power mains interruptions, it is recommended that the URIGHT TM AZURE be powered from an uninterruptible power supply or a battery.
Power frequency 50/60 Hz magnetic field IEC 61000-4-8	30 A/m 50 Hz and 60 Hz	30 A/m 50 Hz and 60 Hz	The URIGHT TM AZURE power frequency magnetic fields should be at levels characteristic of a typical location in a typical home healthcare environment.

NOTE U_n is the a.c. mains voltage prior to application of the test level.

Manufacturer's declaration-electromagnetic immunity			
The URIGHT TM AZURE is intended for use in the electromagnetic environment (for home healthcare) specified below. The customer or the user of the URIGHT TM AZURE should assure that it is used in such an environment.			
Immunity test	IEC 60601 test level	Compliance level	Electromagnetic environment-guidance (for home healthcare environment)
Conducted RF IEC 61000-4-6	3 Vrms: 0.15 MHz - 80 MHz 6 Vrms: in ISM and amateur radio bands between 0.15 MHz and 80 MHz 80 % AM at 1 kHz	Not applicable Not applicable	Portable and mobile RF communications equipment should be used no closer to any part of the URIGHT TM AZURE including cables, than the recommended separation distance calculated from the equation applicable to the frequency of the transmitter.
Radiated RF IEC 61000-4-3	10 V/m, 80 MHz - 2.7 GHz 80 % AM at 1 kHz	10 V/m, 80 MHz - 2.7 GHz 80 % AM at 1 kHz	Recommended separation distance: d = 1,2 √P d = 1,2 √P 80MHz to 800 MHz d = 2,3 √P 800MHz to 2.7 GHz Where P is the maximum output power rating of the transmitter in watts (W) according to the transmitter manufacturer and d is the recommended separation distance in metres (m). Interference may occur in the vicinity of equipment marked with the following symbol:

NOTE 1 At 80 MHz and 800 MHz, the higher frequency range applies.
NOTE 2 These guidelines may not apply in all situations. Electromagnetic propagation is affected by absorption and reflection from structures, objects and people.

Recommended separation distance between portable and mobile RF communications equipment and the URIGHT TM AZURE				
The URIGHT TM AZURE is intended for use in the electromagnetic environment (for home healthcare) in which radiated RF disturbances are controlled. The customer or the user of the URIGHT TM AZURE can help prevent electromagnetic interference by maintaining a minimum distance between portable and mobile RF communications equipment (transmitters) and the URIGHT TM AZURE as recommended below, according to the maximum output power of the communications equipment.				
Rated maximum output power of transmitter (W)	Separation distance according to frequency of transmitter m			
	150 kHz to 80 MHz d = 1,2 √P	80 MHz to 800 MHz d = 1,2 √P	800 MHz to 2.7 GHz d = 2,3 √P	
0,01	N/A	0,12	0,23	
0,1	N/A	0,38	0,73	
1	N/A	1,2	2,3	
10	N/A	3,8	7,3	
100	N/A	12	23	

For transmitters rated at a maximum output power not listed above, the recommended separation distance d in meters (m) can be estimated using the equation applicable to the frequency of the transmitter, where P is the maximum output power rating of the transmitter in watts (W) according to the transmitter manufacturer.
NOTE 1 At 80 MHz and 800 MHz, the separation distance for the higher frequency range applies.
NOTE 2 These guidelines may not apply in all situations. Electromagnetic propagation is affected by absorption and reflection from structures, objects and people.

Manufacturer's declaration-electromagnetic immunity Test specifications for ENCLOSURE PORT IMMUNITY to RF wireless communications equipment								
The URIGHT TM AZURE is intended for use in the electromagnetic environment (for home healthcare) specified below. The customer or the user of the URIGHT TM AZURE should assure that it is used in such an environment.								
Test frequency (MHz)	Band ^{a)} (MHz)	Service ^{a)}	Modulation ^{b)}	Maximum power (W)	Distance (m)	IMMUNITY TEST LEVEL (V/m)	Compliance LEVEL (V/m) (for home healthcare)	
385	380 - 390	TETRA 400	Pulse modulation ^{a)} 18 Hz	1,8	0,3	27	27	
450	430 - 470	GSM-R 460, FRS 460	FM ^{a)} ±5 kHz deviation 1 kHz sine	2	0,3	28	28	
710	704 - 787	LTE Band 13, 17	Pulse modulation ^{a)} 217 Hz	0,2	0,3	9	9	
745								
780								
810	800 - 960	GSM 800/900, TETRA 800, iDEN 820, CDMA 850, LTE Band 5	Pulse modulation ^{a)} 18 Hz	2	0,3	28	28	
870								
930								
1720	1700 - 1990	GSM 1800; CDMA 1900; GSM 1900; DECT; LTE Band 1, 3, 4, 25; UMTS	Pulse modulation ^{a)} 217 Hz	2	0,3	28	28	
1845								
1970								
2450	2400 - 2570	Bluetooth, WLAN, 802.11 b/g/n, RFID 2450, LTE Band 7	Pulse modulation ^{a)} 217 Hz	2	0,3	28	28	
5240	5100 - 5800	WLAN 802.11 a/n	Pulse modulation ^{a)} 217 Hz	0,2	0,3	9	9	
5500								
5785								

NOTE If necessary to achieve the IMMUNITY TEST LEVEL, the distance between the transmitting antenna and the ME EQUIPMENT or ME SYSTEM may be reduced to 1 m. The 1 m test distance is permitted by IEC 61000-4-3.
a) For some services, only the uplink frequencies are included.
b) The carrier shall be modulated using a 50 % duty cycle square wave signal.
c) As an alternative to FM modulation, 50 % pulse modulation at 18 Hz may be used because while it does not represent actual modulation, it would be worst case.

TERMS & CONDITIONS OF WARRANTY

- We warrant this product to be free of defects in workmanship and materials within the said warranty period on the warranty certificate.
- During the warranty period, if this product is found to be defective, you may bring it together with the purchase receipt and Warranty Certificate, on a carry-in basis to our office during normal business hours for warranty service. We will then repair or replace defective parts or exchange the whole product as we may choose, with no additional charge to the original owner. After such repair, replacement or exchange, the product will be warranted for the remaining of the warranty period.
- This warranty is valid only if the Warranty Certificate and Warranty Registration Card are duly completed with date of purchase, serial number and dealer's stamp, and if the Warranty Registration Card is sent to our office not later than 14 days from the date of purchase.
- This warranty is void if this product has been repaired or serviced by unauthorized person. This warranty does not cover defects caused by misuse, abuse, accident, tampering, lack of reasonable care, fire or any other acts beyond human control.
- Except as stated in the above paragraphs, we disclaim all other warranties, implied or expressed, including the warranties of merchantability of fitness for a particular purpose with respect to the use of this product. We shall not be liable for any direct, consequential or incidental damages arising out of the use or inability to use this product.

PLEASE AFFIX STAMP

DEALER'S INFORMATION